



FORUMS



**CEO CLUBS**  
International

SAVE THE DATE

May 25, 2017  
Ecali Club, 15.00hrs.

# SHIFTABILITY

## Shifting in What's Next

We invite you to start a journey of personal transformation that will equip you with this mindset and skillset that you need to thrive in the current shifting context and survive whatever future changes lie ahead.

### The mastery of:

- Embracing Complexity
- Creating Personalized Insight
- Leveraging & Managing Tension



with  
**Hendre Coetzee**  
Corporate Transformation Specialist,  
Speaker, Executive Coach



For more information: +30 210 8920950, [info@ceoclubsgreece.com](mailto:info@ceoclubsgreece.com), [www.ceoclubsgreece.org](http://www.ceoclubsgreece.org)

#### Main Partner



#### Diamond Partners



#### Platinum Partners



#### Golden Partners



#### Silver Partners





**CEO CLUBS**  
International

May 25, 2017  
Ecali Club, 15.00hrs.

## SHIFTABILITY - Shifting in What's Next

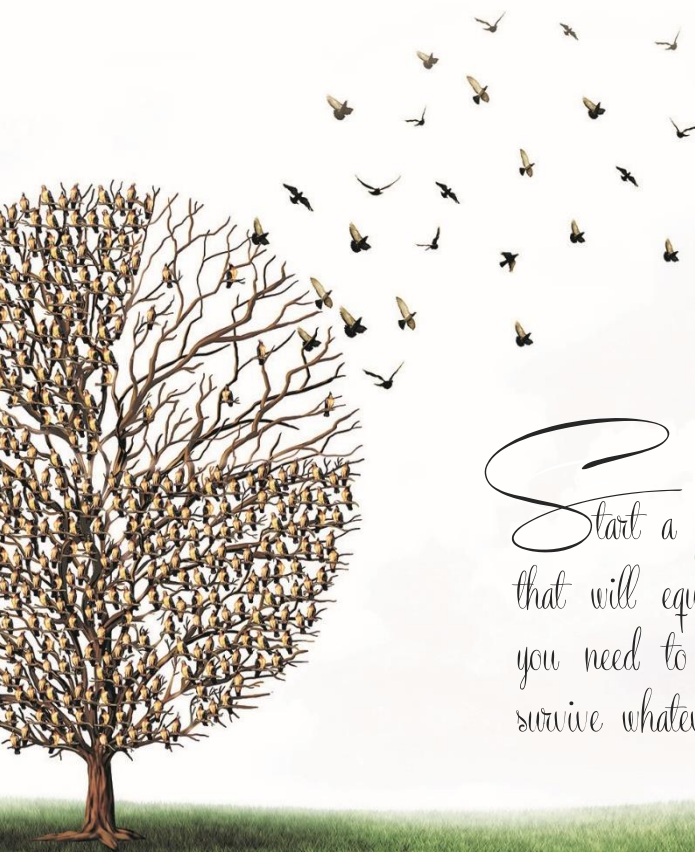
### Developing the Mastery of :

- Embracing Complexity
- Creating Personalized Insight
- Leveraging & Managing Tension

Shiftability encompasses both awareness and action. It is having the combined mindset and skillset to understand the circumstances around you and then to act appropriately in pursuit of your desired results. Shiftability is about adapting and changing in response to circumstances around you – but it's not about compromise.

Shiftability is about awareness and action, giving and taking, while staying true to who you are, rooted in principles of integrity and purpose. Shiftability responds to outward demands from inward strength, purpose and skill.

The mindset of shiftability acknowledges the need for change and transformation and embraces it, keeping an open mind about new ideas while wisely retaining things that still apply, always learning, always building, always growing.



*Start a journey of personal transformation that will equip you with this mindset and skillset that you need to thrive in the current shifting context and survive whatever future changes lie ahead.*



FORUMS



**CEO CLUBS**  
International

May 25, 2017  
Ecali Club, 15.00hrs.

## SHIFTABILITY – Shifting in What's Next



w| [advancedcoaching.com](http://advancedcoaching.com)

w| [hendrecoetzee.com](http://hendrecoetzee.com)

Hendre Coetzee is a Transformation Specialist.

His work as speaker and executive coach, has allowed him to address executives, boards, teams and entire organizations on the subjects of the Future of Work, How Technology can enable Humanity, Transformation and Change, Unlocking Potential and Resilience.

He is as comfortable doing a Keynote for an audience of 10,000 as speaking to a Sales team inside a corporation. He is a regular speaker at CEO Clubs and YPO events around the world.

Hendre regularly speaks on:

- The Neuroscience of Creativity
- The Future of Work
- Technology and Being more Human
- Developing Resilience in Your Leaders and Managers
- Creating a Neutral Frame and Dealing with Tension in Sales
- The Coach Approach to Leadership
- Advanced Coaching Mastery for Leaders
- Designing your Next Big Leap Deliberately

He has over 20 years of experience within the corporate domain, realms of social justice, non-profit and relief and development work across the globe. He has provided transformational work in over 50 countries and has guest lectured at a number of universities including the Harvard Faculty Club multiple times on the Neuroscience of Change and Transformation.

Hendre's experience varies from working as a facilitator for the integration between black and white youth in post-Apartheid South Africa, to negotiating mergers for large financial institutions and developing performance-training modules for High Performing Traders on the NYSE and NASDAQ. He has facilitated transformation processes for multiple companies and leaders embarking on a reset and build process.

Whether as Keynote Speaker, Workshop Facilitator his commitment is to unlock people's potential, co-design a clear path forward and move the audience into momentum.

His clients include **IBM, Microchip Technologies, API, Disney, ESPN, Estee Lauder, Revlon, New York Life and FedEx.**



## AGENDA

15.00 – 15.30	<i>REGISTRATION</i>
15.30 – 16.00	NEWS FROM CEO CLUBS
16.00 – 17.30	<b>SHIFTABILITY</b> with <b>HENDRE COETZEE</b> <i>Corporate Transformation Specialist, Speaker, Executive Coach</i>
17.30 – 18.00	<i>BREAK</i>
18.00 – 19.00	ROUND TABLE DISCUSSION
19.00 – 19.30	CONCLUSIONS
19.30 – 21.00	<i>COCKTAIL RECEPTION</i>





## REGISTRATION FORM

### For CEOs & their Executive Team Members

Complete this form in English and return it to the CEO CLUBS GREECE by e-mail:  
info@ceoclubsgreece.com no later than **May 19, 2017**

Payment is due within 5 days of application.

### CONTACT DETAILS

FULL NAME

COMPANY/ TYPE OF BUSINESS

CONTACT PERSON

BILLING ADDRESS

VAT NUMBER

TAX AUTHORITY

TELEPHONE

EMAIL

### MEMBERS

Free for the CEO  
€150 + VAT for their Executive Team Members



### NON MEMBERS

€250 + VAT for non-Members and  
their Executive Team Members



**Corporate Table  
of 8 Executives: €1000 + VAT**

**€1800 + VAT**

### MY EXECUTIVE TEAM

NAME 1

NAME 6

NAME 2

NAME 7

NAME 3

NAME 8

NAME 4

NAME 5

### METHOD OF PAYMENT

- Deposit at Alpha Bank Account Number: 122002002013246 IBAN: GR8201401220122002002013246
- Deposit at EFG Eurobank Account Number: 00260012310200742327 IBAN: GR2702600120000310200742327

**Important:** Please make sure to include on the bank deposit slip, the name of your company or your name. It is necessary to send us the deposit slip by fax.